



Smart air for smarter living

OWNER'S MANUAL

ZONE CONTROLLER



Zone Controller System
LE60-13/GH

CHECKING RECEIVED PRODUCT

Upon receiving the appliance, please inspect for damage. Claims for damage should be reported immediately with the transportation company. Check the model number of the appliance and ensure it matches the order.

In the event an incorrect appliance or a damaged appliance is delivered, it must be returned to the supplier and must NOT be installed. The manufacturer assumes no responsibility for installation of incorrectly delivered and/or damaged appliances.

REGISTER YOUR PRODUCT FOR WARRANTY

<https://greeac.co.nz/warranty-claim>

CONTENTS

INTRODUCTION AND SAFETY.....	2
OPERATION.....	3
ON/OFF.....	4
MODE SETTING.....	4
TEMPERATURE SETTING.....	5
FAN SETTING.....	5
MENU STRUCTURE.....	6
FUNCTION	7
FRESH AIR.....	7
HEALTHY.....	7
QUIET.....	7
SAVE.....	8
I-DEMAND.....	8
HOLIDAY.....	8
LOW TEMPERATURE DRY.....	8
X-FAN.....	9
FILTER CLEAN REMIND.....	9
MEMORY.....	9
TEMPERATURE UNIT.....	9
RESET WIFI.....	10
ZONE CONTROL.....	11
DAILY TIMER.....	11
WEEK TIMER.....	12
TWO WEEK TIMER.....	13
ZONE CONTROL.....	14
MAIN ZONE SETTING.....	15
ALWAYS OPEN ZONE.....	15
ZONE PARAMETER SETTINGS.....	15
CONNECT RF REMOTE CONTROL.....	16
SYSTEM.....	17
DATE AND TIME.....	17
HOUR FORMAT SETTING.....	17
LANGUAGE SETTING.....	18
LIGHTNESS SETTING.....	18
BACKLIGHT SETTING.....	19
SOUND SETTING.....	19
MAIN OR SUBSIDIARY CONTROLLER.....	20
DEBUG.....	20
VIEW	21
PARAMETER VIEW.....	21
AMBIENT TEMPERATURE OF ZONE.....	21
VIEW MALFUNCTION.....	21
WIFI MODULE INSTALLATION.....	22
ERROR CODES.....	25
NORMAL OPERATION CODES.....	26
MAINTENANCE AND SERVICE.....	26
MAINTENANCE SCHEDULE.....	27
OPERATION TIPS.....	28
TROUBLESHOOTING.....	29
SYSTEM INFORMATION.....	30
CHARTS.....	31

WARNING: Failure to install and commission the product in compliance with these instructions, or failure to do the job properly and competently, may void the customer's warranty. Further, it could expose the Installer and/or the Retailer to serious liability.

INTRODUCTION AND SAFETY

Congratulations on purchasing a new Gree Zone Controller. Please keep this Manual and the Warranty Booklet in a safe place, along with the original purchase documents, plus all relevant certificates of compliance relating to the installation work performed. Please register the Warranty straight away, by following the steps set out in the Warranty Booklet.

The installer must read the Installation Manual before installing the zone controller.

The home owner/user should read the Owner's Manual before operating the appliance.

To ensure the warranty on the appliance is continued and valid, the appliance must be checked and serviced by the home owner/user as per the requirements in the Maintenance & Service section and the Maintenance Schedule. This will also prolong the life of your appliance.

IMPORTANT!

THE AUSTRALIAN GREENHOUSE OFFICE HAS ISSUED VARIOUS REGULATIONS ON THE USE AND DISPOSAL OF REFRIGERANTS IN THE APPLIANCE. FAILURE TO FOLLOW THESE REGULATIONS MAY HARM THE ENVIRONMENT AND COULD LEAD TO THE IMPOSITION OF SUBSTANTIAL FINES.

WHERE SPECIFIED, ONLY QUALIFIED AND LICENSED TECHNICIANS SHOULD PERFORM WORK ON THIS APPLIANCE, FAILING WHICH THE WARRANTY ON THE APPLIANCE WILL BE VOID.

WARNING! This appliance is not intended for use by persons (including children) with reduced physical, sensory or mental capabilities, or lack of experience and knowledge, unless they have been given supervision or instruction concerning use of the appliance by a person responsible for their safety.

Children should be supervised to ensure that they do not play with the appliance.

If the supply cable is damaged, it must be replaced by the manufacturer, its service agent or similarly qualified persons in order to avoid a hazard.

OPERATION

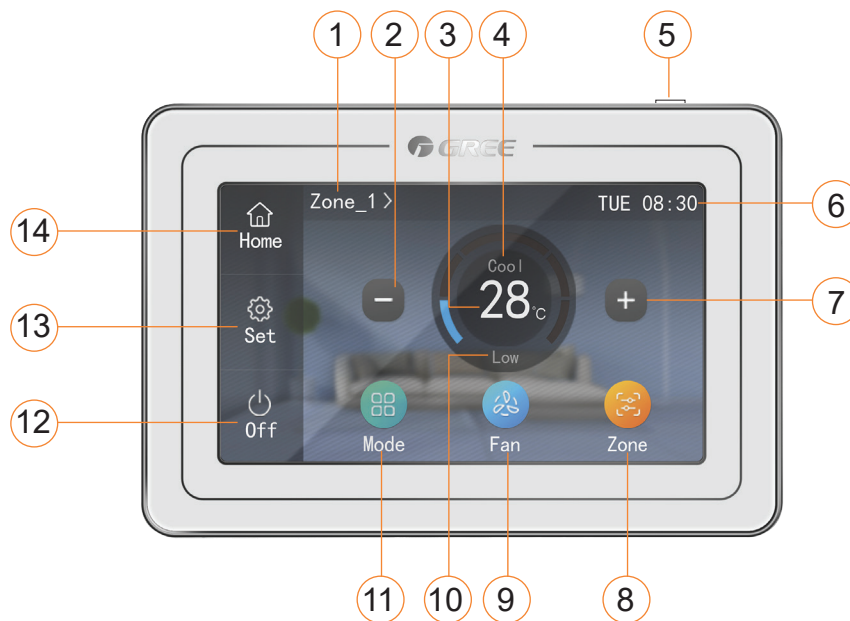


Fig 1.

NO.	Name	Instructions
1	Name of the current zone	- Shows the name of the current zone. The set temperature displayed on the home page is the temperature of the current zone. - Press to switch to another zone.
2	Decrease	Press to decrease the set temperature of the current zone
3	Set temperature display	Shows the set temperature of the current zone
4	Mode display	Shows Cool, Dry, Fan, Heat and Auto modes.
5	Button	- Press this button to turn on or off the screen. - Press this button for 5s to reset the screen.
6	Time	- Shows the current time. - Press to enter the page of time menu to view or set the date and time.
7	Increase	Press to increase the set temperature of the current zone.
8	Zone button	Press to enter the page of zone control to set the name, temperature, on/off of each effective zone.
9	Fan button	Press to change the fan speed.
10	Current fan speed	Shows the current fan speed.
11	Mode button	Press to switch to another mode. COOL~DRY~FAN~HEAT~AUTO
12	On/Off button	Press to turn on or off the unit.
13	Menu button	Press to enter the page of menu.
14	Home button	Press to turn to the home page.

OPERATION

ON/OFF

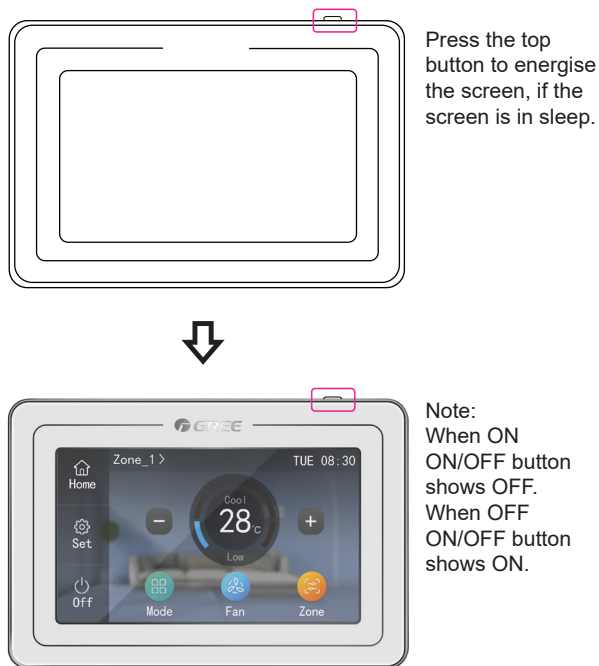


Fig 2.

MODE SETTING

Under the ON state of the appliance, press the Mode button to switch the operation modes as the sequence shown below.

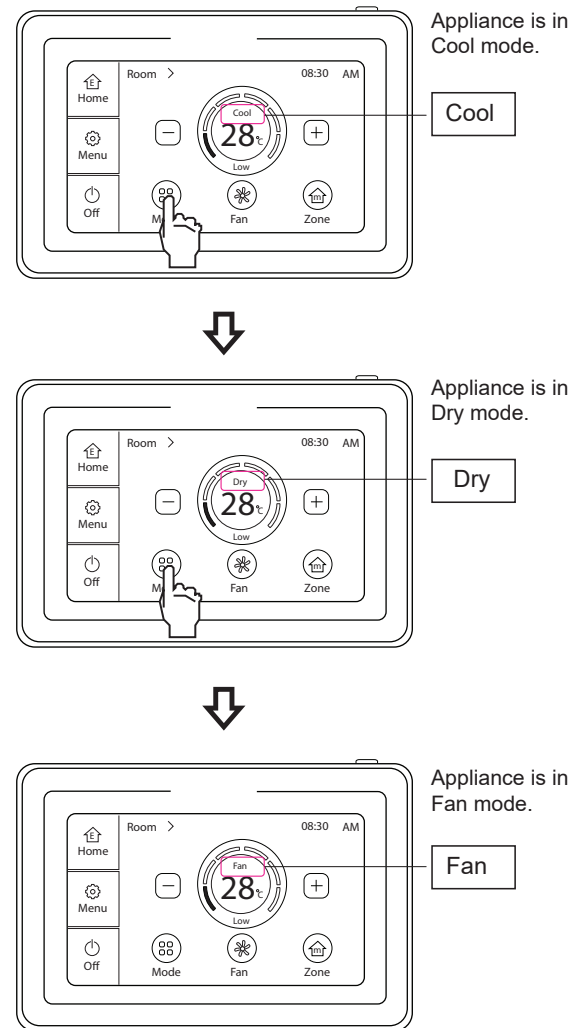
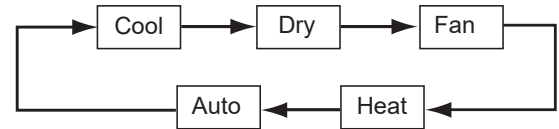


Fig 3.

OPERATION cont.

TEMPERATURE SETTING

Adjust the SET temperature within the range 16-30°C.

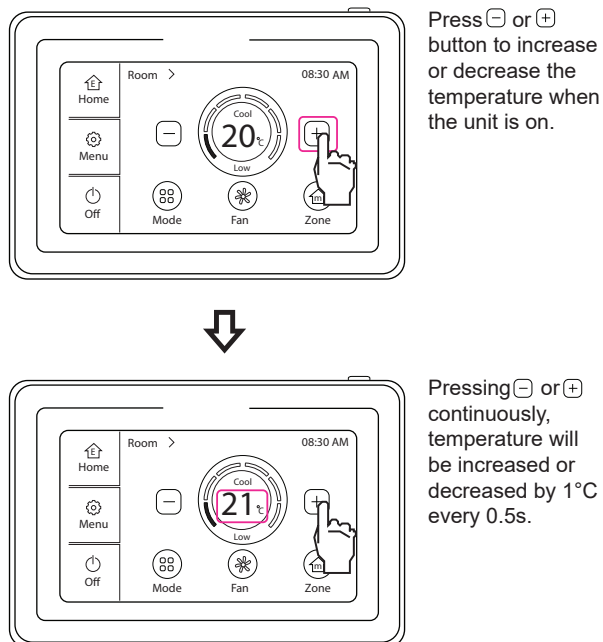


Fig 4.

Note: For energy efficiency and lower operating cost we suggest operating your appliance as follows.

Cool: 24 ~ 30°C
Heat: 16 ~ 20°C

FAN SETTING

Press the Fan button to vary the speeds as shown in the sequence below.

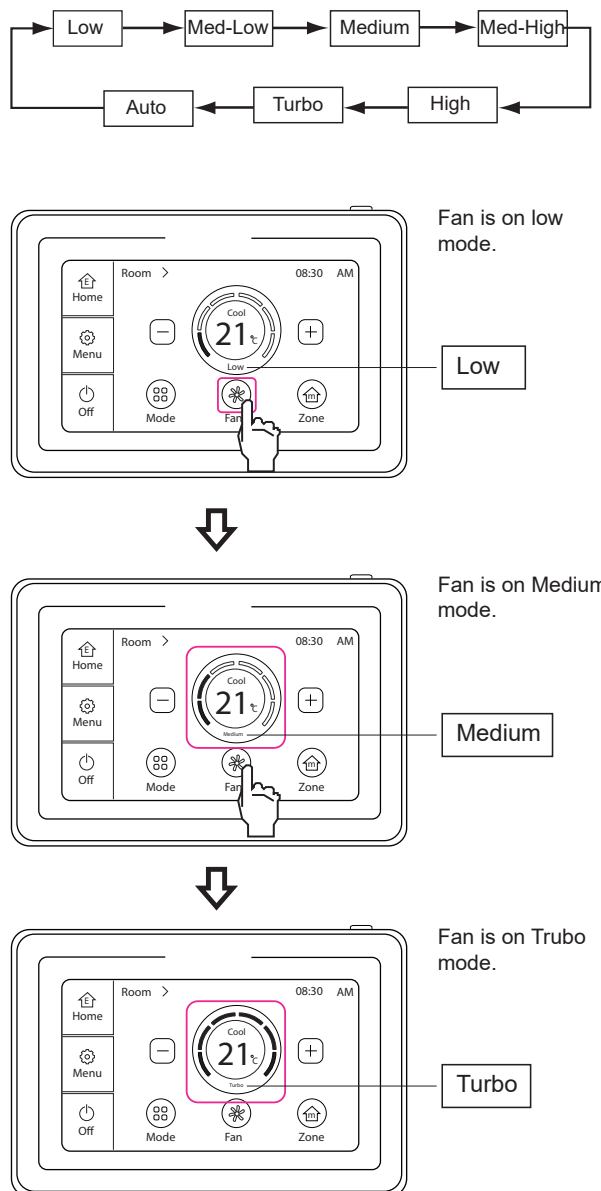


Fig 5.

OPERATION cont.

MENU STRUCTURE

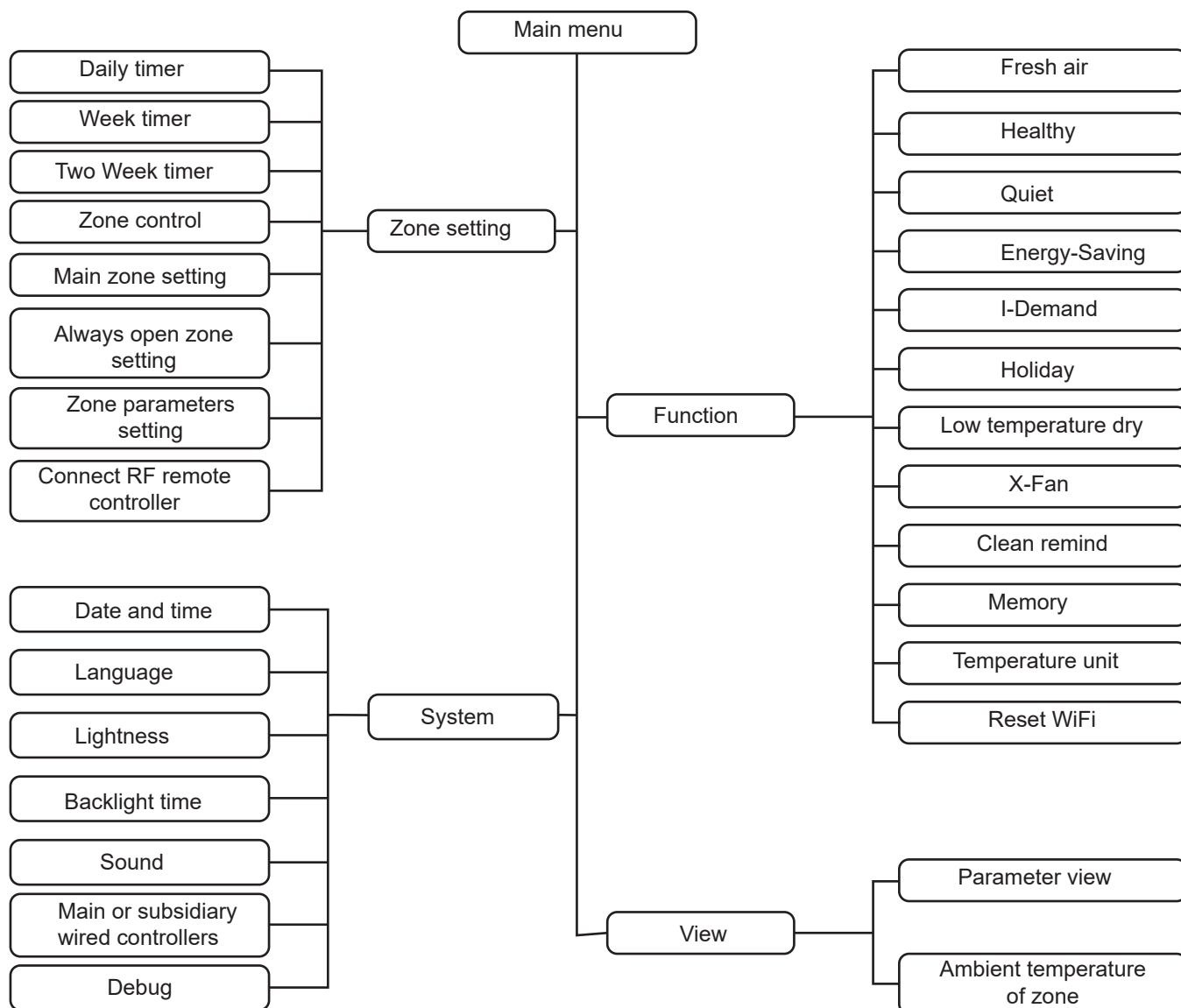


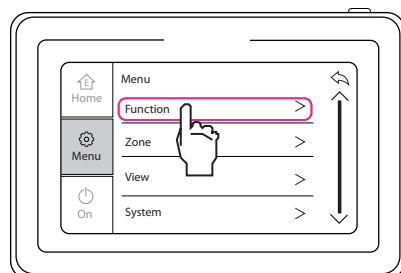
Fig 6.

The instructions on the following pages follows the above “Menu” structure.

1. Function
2. Zone Setting
3. System
4. View

FUNCTION

- | | |
|--------------|------------------------|
| 1. Fresh air | 7. Low Temperature dry |
| 2. Healthy | 8. X-Fan |
| 3. Quiet | 9. Filter Clean Remind |
| 4. Save | 10. Memory |
| 5. I-Demand | 11. Temperature Unit |
| 6. Holiday | 12. Reset WiFi |



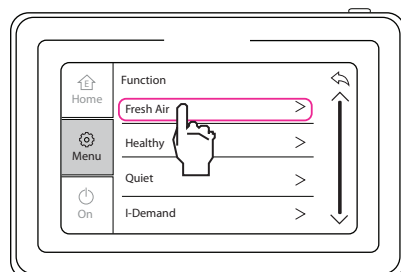
Press the Menu button on the home page to enter menu page.

Press "Function" to enter setting page.

Fig 7.

1. FRESH AIR

This is used to adjust the fresh air volume indoors to improve air quality. When setting the fresh air function, there are 10 fresh air modes that operate according to the indoor fan running time. Optional additional components are required - speak to your installer, this function may not be available.



1 - Fan will operate for 60 mins, fresh air damper will open for 6 mins.

2 - Fan will operate for 60 mins, fresh air damper will open for 12 mins.

3 - Fan will operate for 60 mins, fresh air damper will open for 18 mins.

4 - Fan will operate for 60 mins, fresh air damper will open for 24 mins.

5 - Fan will operate for 60 mins, fresh air damper will open for 30 mins.

6 - Fan will operate for 60 mins, fresh air damper will open for 36 mins.

7 - Fan will operate for 60 mins, fresh air damper will open for 42 mins.

8 - Fan will operate for 60 mins, fresh air damper will open for 48 mins.

9 - Fan will operate for 60 mins, fresh air damper will open for 54 mins.

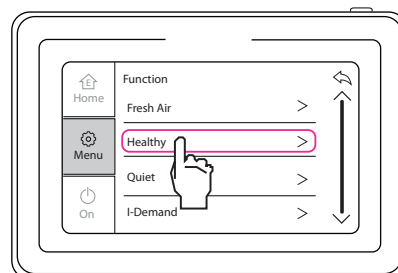
10 - Fan will operate for 60 mins, fresh air damper is always open.

Fig 8.

2. HEALTHY

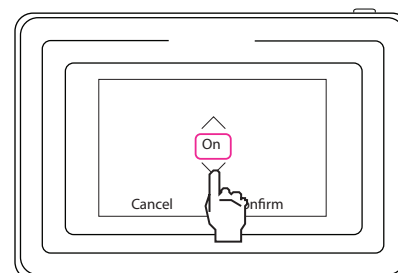
This function controls the operation of an optional air purifier.

Optional additional components are required - speak to your installer, this function may not be available.



Press the Menu button on the home page to enter function page.

Press "Healthy" to enter function page.



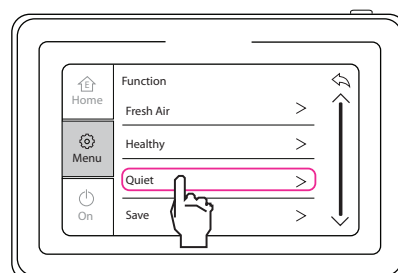
Press the ^ and v buttons to turn the function On/Off.

Press "Confirm" to return to the previous page.

Fig 9.

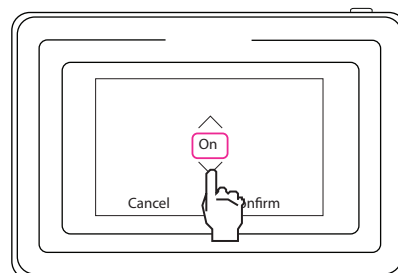
3. QUIET

QUIET function can be activated to use lower indoor fan speeds to reach the SET temperature when in AUTO, COOL and HEAT modes.



Press Menu button on the home page to enter the function menu.

Press "Quiet" to enter the setting.



Press the ^ and v buttons to turn the function On/Off.

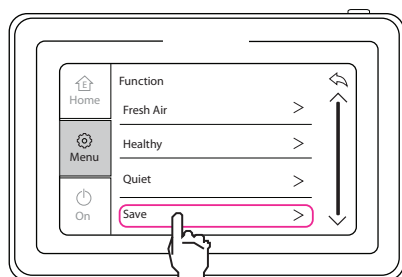
Press "Confirm" to return to the previous page.

Fig 10.

FUNCTION cont.

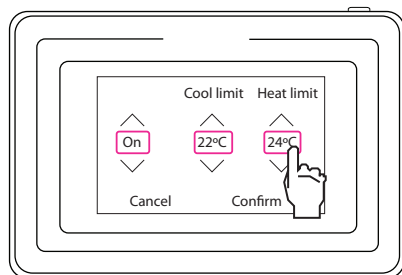
4. SAVE

By setting the lower limit of set temperature for cool and dry modes and the upper limit of set temperature for heat mode, the appliance will run in a smaller temperature range, to save energy.



Press the Menu button on the home page to enter function page.

Press "Save" to enter function page.



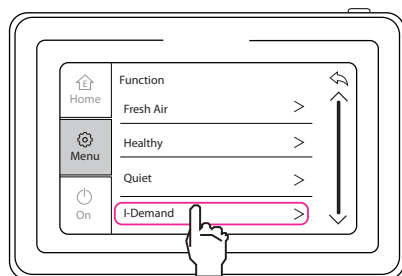
Press the ^ and v buttons to set the values.

Press "Confirm" to return to the previous page.

Fig 11.

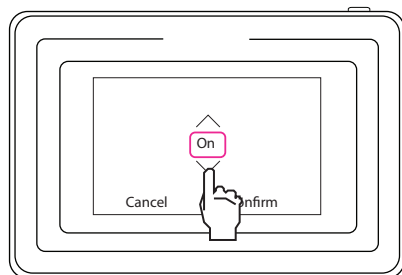
5. I-DEMAND

When the appliance is first turned on in COOL or HEAT modes, set I-Demand. Limiting the maximum power usage 75%. Set temperature is fixed at 27°C and auto fan speed.



Press the Menu button on the home page to enter function page.

Press "I-Demand" function page.



Press the ^ and v buttons to turn the function On/Off.

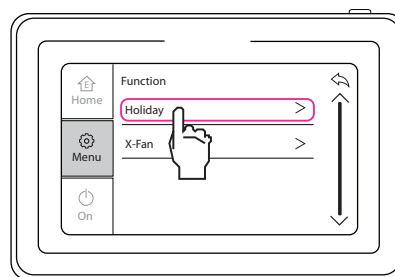
Press "Confirm" to return to the previous page.

Note:
Refer to page 32 for I-Demand Chart.

Fig 12.

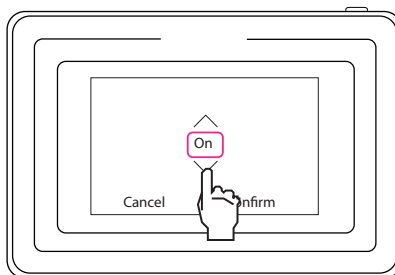
6. HOLIDAY

This is used to maintain indoor temperature so that unit can perform heating quickly upon return. Holiday function is only available in heat mode and fixed at 8 degrees.



Press the Menu button on the home page to enter function page.

Press "Holiday" to enter function page.



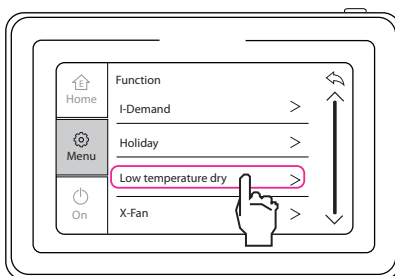
Press the ^ and v buttons to turn the function On/Off.

Press "Confirm" to return to the previous page.

Fig 13.

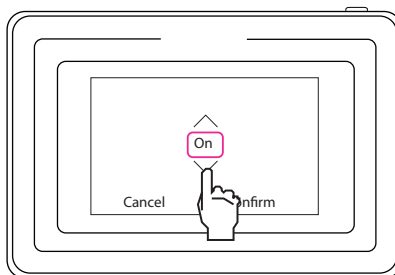
7. LOW TEMPERATURE DRY

The appliance runs in dry mode at low temperature. Activating this function reduces the dry set temperature from 16°C to 12°C



Press the Menu button on the home page to enter function page.

Press the "Low temperature dry" function page.



Press the ^ and v buttons to turn the function On/Off.

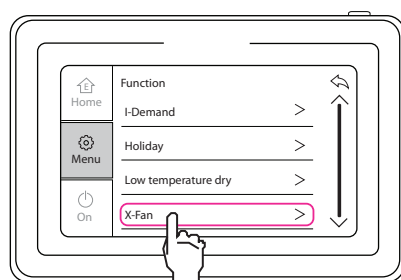
Press "Confirm" to return to the previous page.

Fig 14.

FUNCTION cont.

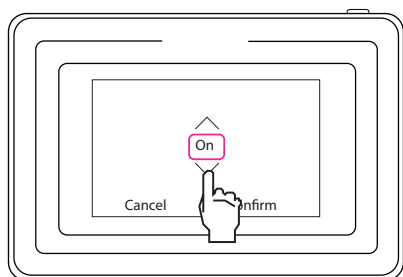
8. X-FAN

The X-FAN function can be used in COOL or DRY modes, to continue operation of the indoor fan after the system is turned off (to remove excess moisture from the indoor coil).



Press the Menu button on the home page to enter function page.

Press "X-Fan" to enter function page.



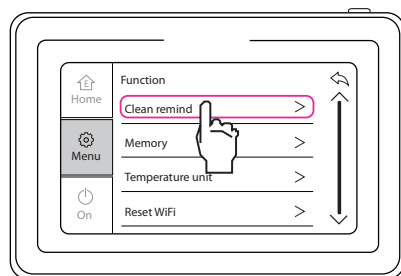
Press the ^ and v buttons to turn the function On/Off.

Press "Confirm" to return to the previous page.

Fig 15.

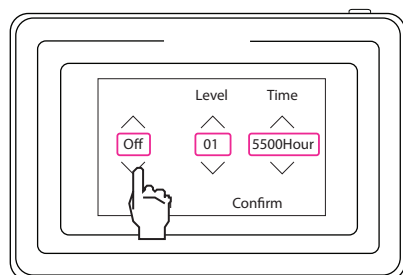
9. FILTER CLEAN REMIND

When this function is enabled, the appliance will record its operation time. When the set time is reached, the user will be reminded to clean the filter.



Press the Menu button on the home page to enter function page.

Enter "clean remind" function page.



Press the ^ and v buttons to set the level and time.

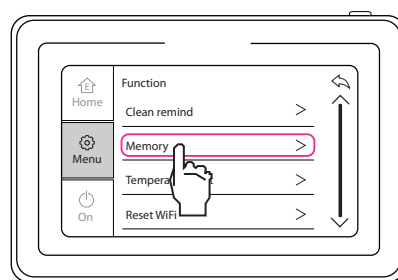
Press "Confirm" to save.

Note:
Refer to page 31 for filter clean remind table.

Fig 16.

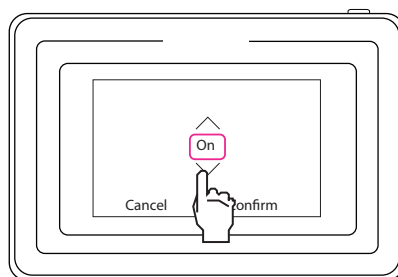
10. MEMORY

The unit resumes the original ON/OFF state when power is restored after power failure.



Press the Menu button on the home page to enter function page.

Press "Memory" to enter function page.



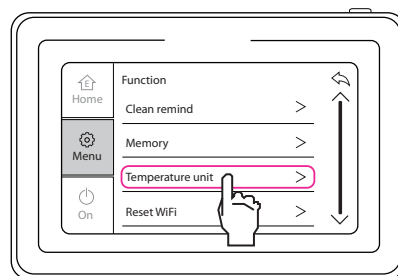
Press the ^ and v buttons to turn the function On/Off.

Press "Confirm" to return to the previous page.

Fig 17.

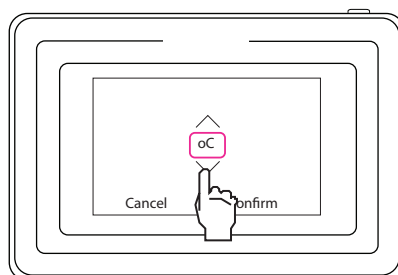
11. TEMPERATURE UNIT

The temperature can be set in Fahrenheit or Celsius.



Press the Menu button on the home page to enter function page.

Press "Temperature unit" to enter function page.



Press the ^ and v buttons to alternate between celsius °C or fahrenheit °F.

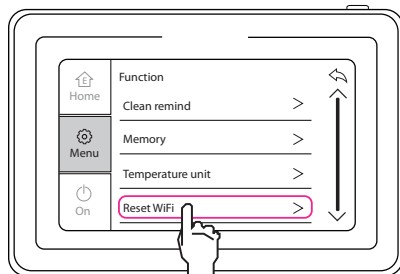
Press "Confirm" to return to the previous page.

Fig 18.

FUNCTION cont.

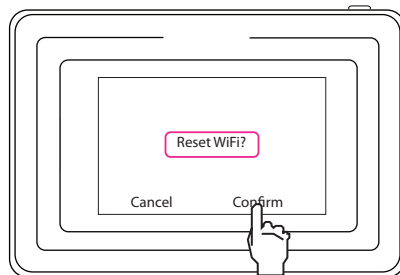
12. RESET WIFI

Reset the WiFi module for network connection.



Press the Menu button on the home page to enter function page.

Press "Reset WiFi" to enter function page.



When in Reset WiFi page, press the Confirm button to reset WiFi.

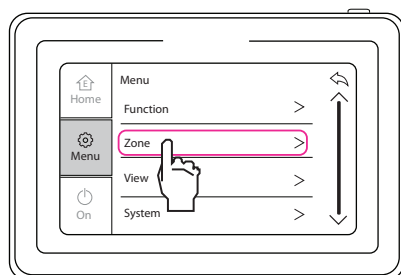
Fig 19.

ZONE SETTING

1. Daily Timer
2. Week Timer
3. Two Week Timer
4. Zone control
5. Main Zone Setting
6. Always Open Zone
7. Zone Parameter setting
8. Connect RF Remote Controller

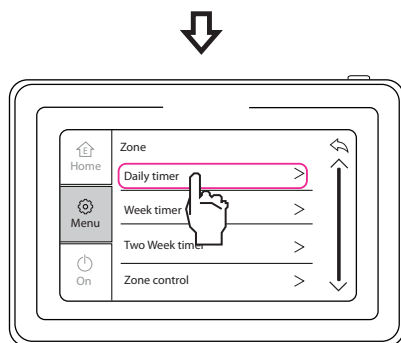
1. DAILY TIMER

In daily timer function, the timer can be set into 8 segments. In each segment you can set the time when the appliance turns ON/OFF and temperature for COOLING/HEATING.

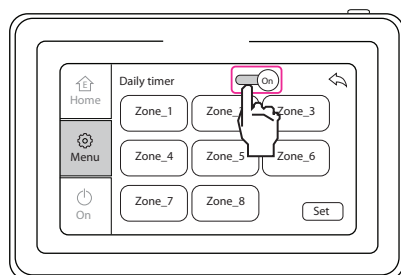


Press Menu button on the home page to enter the function menu.

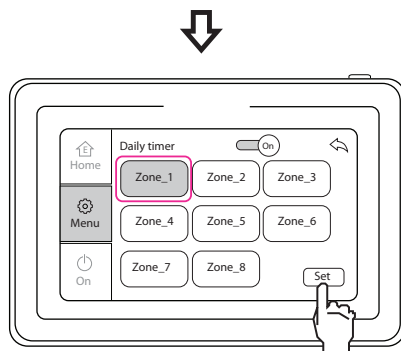
Press "Zone" to enter the page of zone setting.



Press "Daily timer" to enter the page for zone selection.

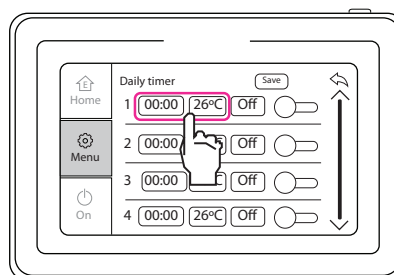


Press the "On/Off" button to turn on or off the timer function.



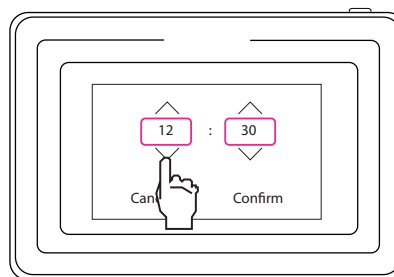
Select the zone or zones to activate. Then press "Set" to enter the timer setting page.

Fig 20.



After entering the timer page, there are 8 sets of timers that can be set.

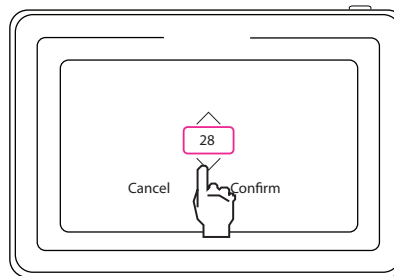
Press the ^ and v buttons to scroll down the page.



Press the on time button to set the desired On time.

Press the ^ or v button to select timer hour or minute.

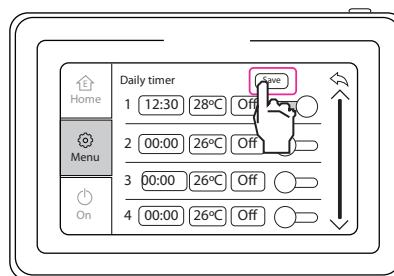
Press "Confirm" to save.



Press on the temperature button to set the desired temperature for the zone.

Press the ^ or v button to set the temperature.

Press "Confirm" to save.



Repeat for time setting 2 - 8 as desired

Press the Save button to "Confirm".

Fig 21.

Note:

1. We recommend using the 24 hour clock as this avoids improper setting of the clock functions.

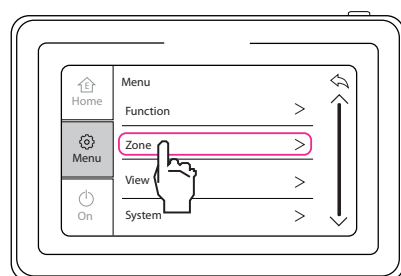
2. The timer must be set (between 00:01 and 23:59), failure to do so will cause malfunction.

3. Ensure the timer settings are in chronological order and they must be all within the same day (between 00:01 to 23:59).

ZONE SETTING cont.

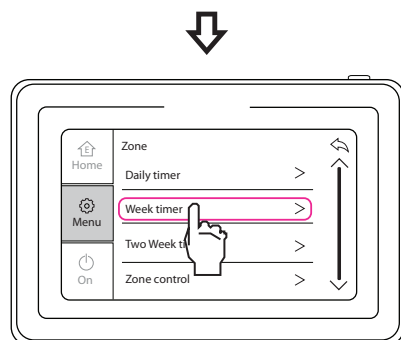
2. WEEK TIMER

The user can set the everyday timer content for a week. In each day, 8 segments can be set for the timer. The appliance will execute corresponding timer settings in a week.

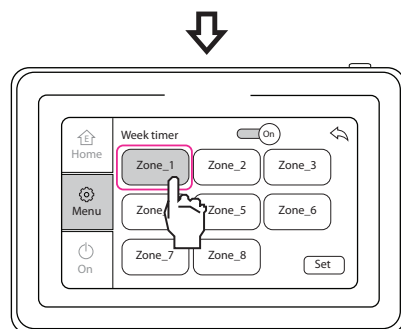


Press Menu button on the home page to enter the function menu.

Press "Zone" to enter the page of zone setting.

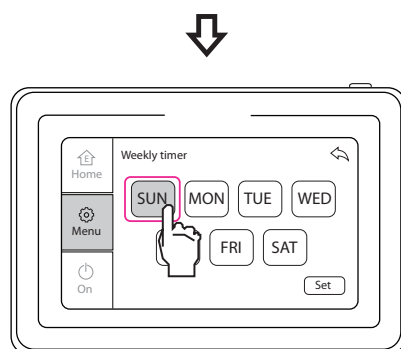


Press "Week timer" to enter the page for zone selection.



Select the zone or zones to activate.

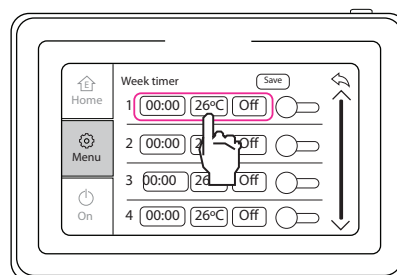
Press "Set" to enter the timer setting page.



Select the days to activate.

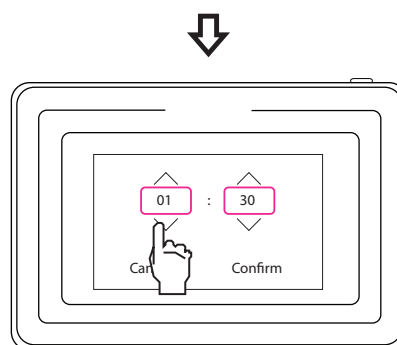
Press "Set" to enter the timer setting page.

Fig 22.



After entering the page of timer setting, there are 8 sets of timers that can be set.

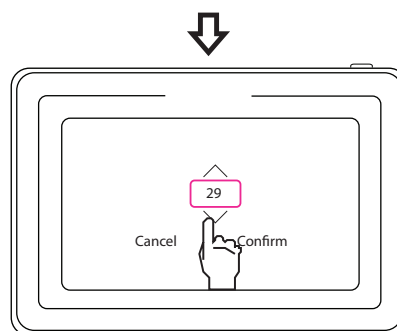
Press the ^ and v buttons to scroll down the page.



Press on the time button to set the desired On time.

Press the ^ or v button to select timer hour or minute.

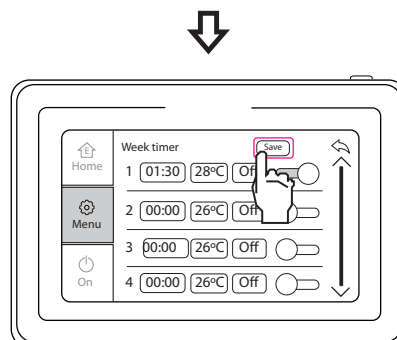
Press "Confirm" to exit.



Press on the temperature button to set the desired temperature for the zone.

Press the ^ or v button to set the temperature

Press "Confirm" to return to main menu.



Repeat for time setting 2 - 8 as desired

Press the "Save" button to confirm.

Fig 23.

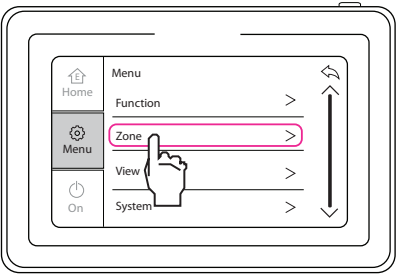
Note:

Ensure the timer settings are in chronological order and they must be all within the same day (between 00:01 to 23:59)

ZONE SETTING cont.

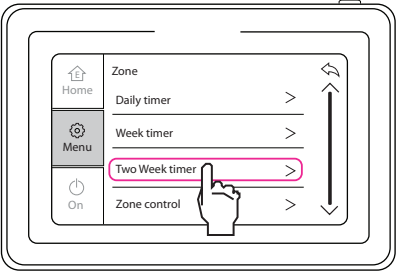
3. TWO WEEK TIMER

The user can set the everyday timer content for two weeks, in each day the 8 segments can be set for each timer. The unit will execute the timer setting for two weeks.

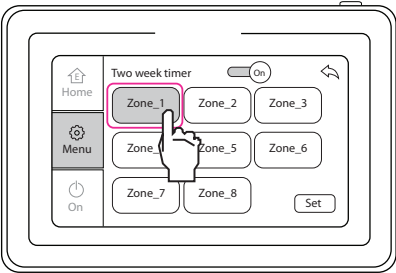


Press Menu button on the home page to enter the function menu.

Press "Zone" to enter the page of zone setting.

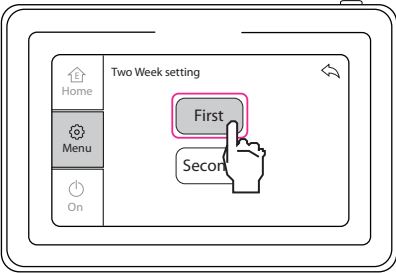


Press "Two week timer" to enter the page for zone selection.



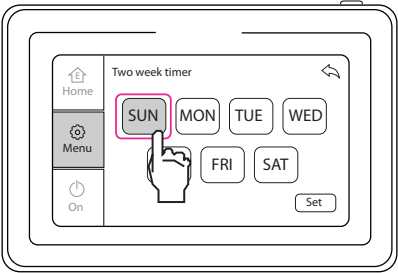
Select the zone or zones to activate.

Press "Set" to enter the timer setting page.



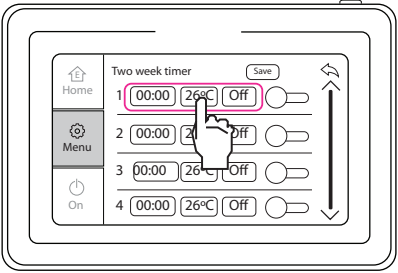
Select the required week to program by pressing "First" or "Second".

Fig 24.



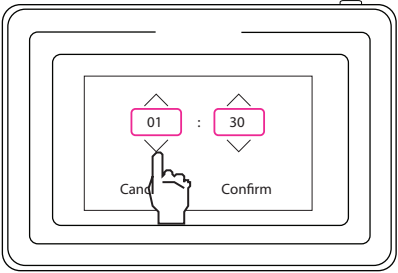
Select the days to activate.

Press "Set" to enter the timer setting page.



After entering the page of timer setting, there are 8 sets of timers that can be set.

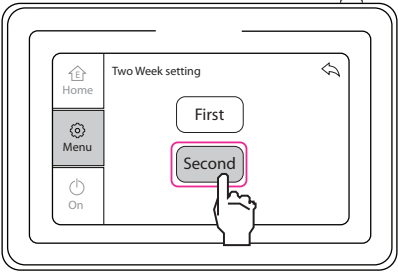
Press the ^ and v buttons to scroll down the page.



Set the desired temperature for the zone.

Press the ^ or v button to set the time and temperature

Press "Confirm" to save.



Repeat the same process for the second week.

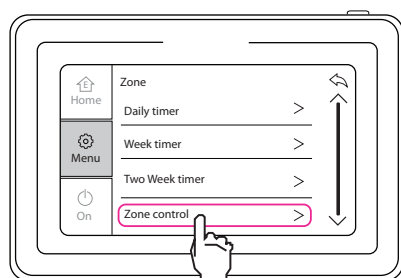
Fig 25.

Note:
Ensure the timer settings are in chronological order and they must be all within the same day (between 00:01 to 23:59)

ZONE SETTING cont.

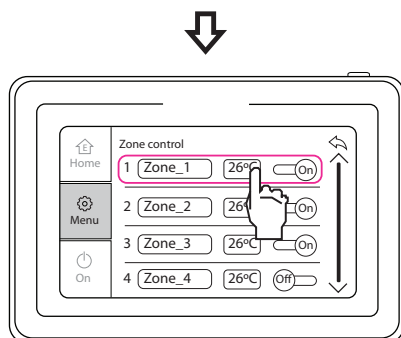
4. ZONE CONTROL

The zone control setting can be used to set zone names, temperature, turn zones On or Off. Zone names must be selected from the list preselected names.



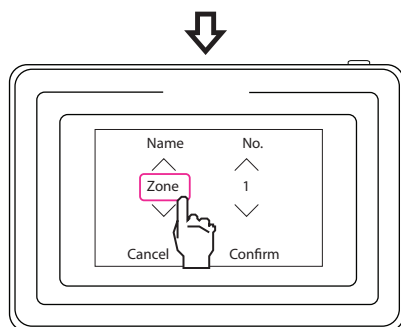
Press Menu button on the home page to enter the function menu.

Press "Zone" to enter the page of zone setting.



8 zones can be set, each page will display 4 zones.

Press ^ the v or buttons to change the page.



Press the name of each zone to enter the page of name setting.

Press the ^ and v buttons to set the name of a specific zone.

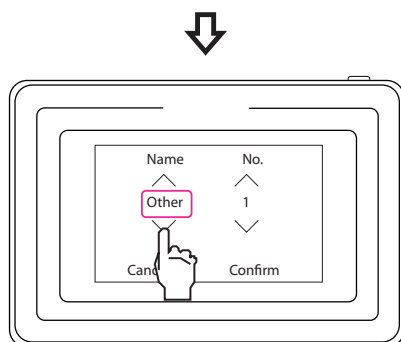
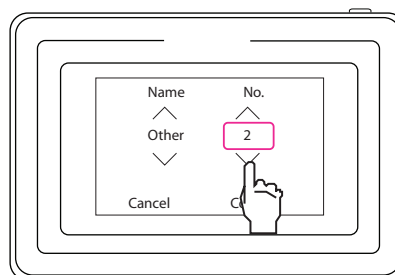


Fig 26.

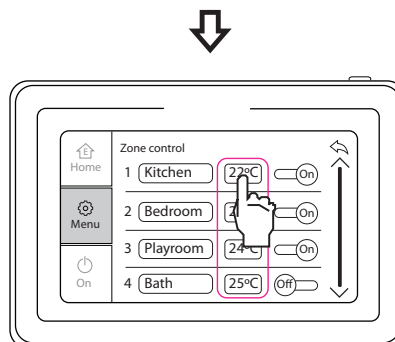
Note:

Your Gree installer may set the following on your behalf at commissioning to ensure everything is connected and operating correctly. The following information will assist you in adjusting the time, or, renaming of the zones.



Press the ^ and v buttons to set the number of a specific zone.

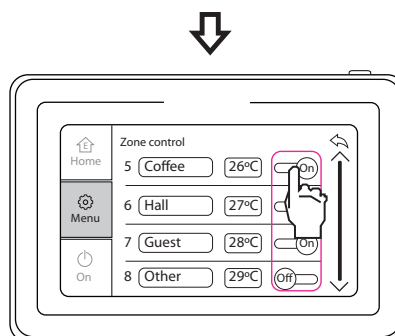
Note: number must match the RF remote sensor, if used.



Set the temperature of each zone.

Press the ^ and v buttons to set temperature.

Press "Confirm" to save the setting.



Press the "On/Off" button of each zone to turn on or off the zone.

Fig 27.

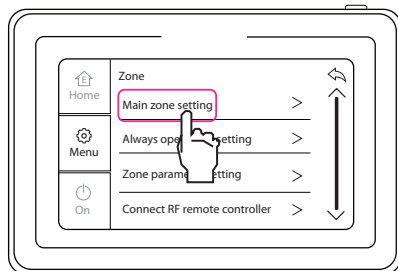
The following zones names can be set.

- Hall
- Bath
- Kitchen
- Playroom
- Hovel
- Coffee
- Study
- Baby
- Dining
- Bedroom
- Guest
- Host
- Zone
- Other

ZONE SETTING cont.

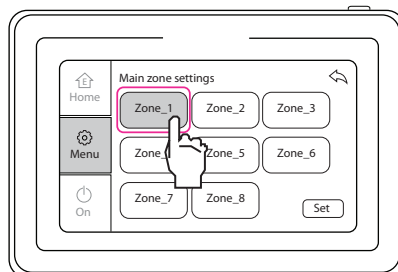
5. MAIN ZONE SETTING

Set the main zone on the system, the main zone is usually the largest area. Zone 1



Press Menu button on the home page to enter the zone menu.

Press "Zone" to enter page.



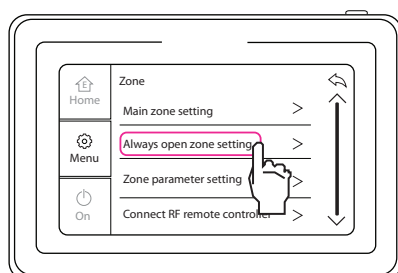
Select the zone that is going to be the main zone.

Press "Confirm" and return to the previous page.

Fig 28.

6. ALWAYS OPEN ZONE

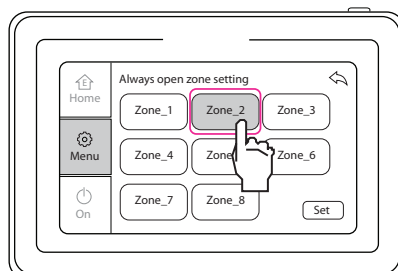
A zone must always be open for the system to operate.



Press Menu button on the home page to enter the function menu.

Then press "Zone" to enter page.

Press "Always open zone setting".



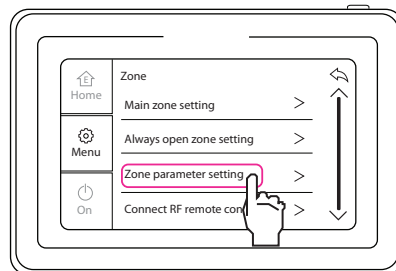
Select the zone that is going to be the always open zone.

Press "Confirm" and return to the previous page.

Fig 29.

7. ZONE PARAMETER SETTINGS

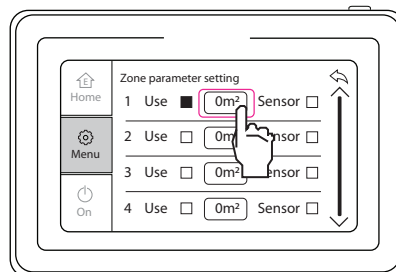
The area of each zone can be set, If an RF remote is being used, "Sensor" will need to be activated.



Press Menu button on the home page to enter the function menu.

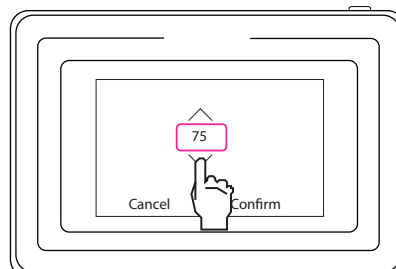
Press "Zone" to enter page.

Press "Zone parameter setting".



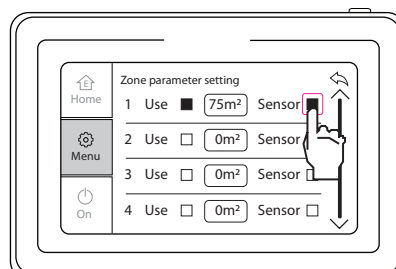
Select the zone to be used.

Find the area of the room by measuring the length and then the width of the room. Then multiply the length and width.



Press the ^ or v button to adjust the required zone size. To calculated measurement

Press "Confirm" to save.



Select Sensor for the zone is equipped with a temperature controller.

Press the return symbol ↶ to return add icon.

Fig 30.

Note: Zone 1 must have an RF remote. The wired wall control does not measure the room temperature. All RF remotes must be set and matched to the Wired Wall Control.

ZONE SETTING cont.

8. CONNECT RF REMOTE CONTROL

When using RF remote controller for the first time, the RF control will need to be paired with the zone control interface.

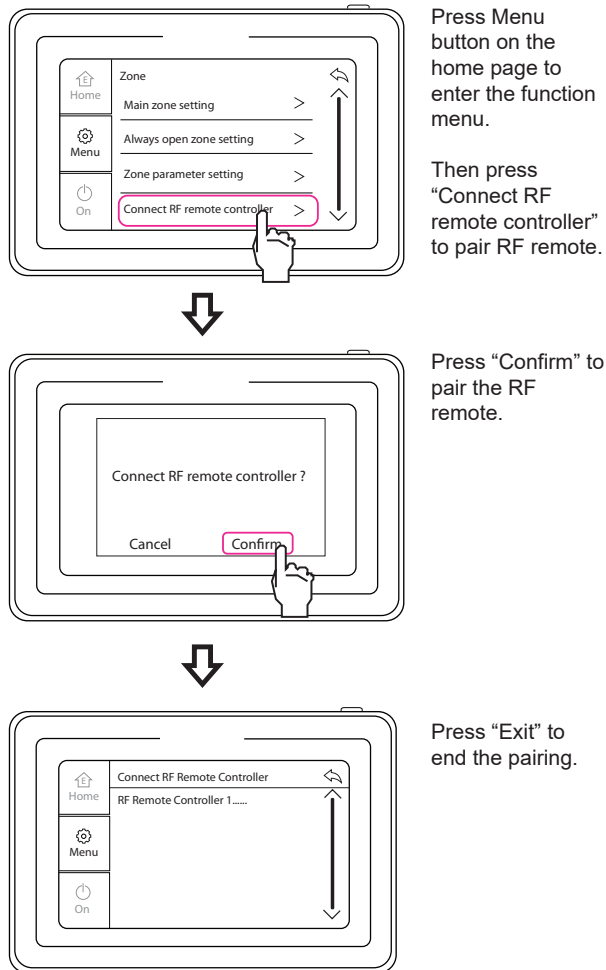


Fig 31.

Note:
RF controller is required for pairing.

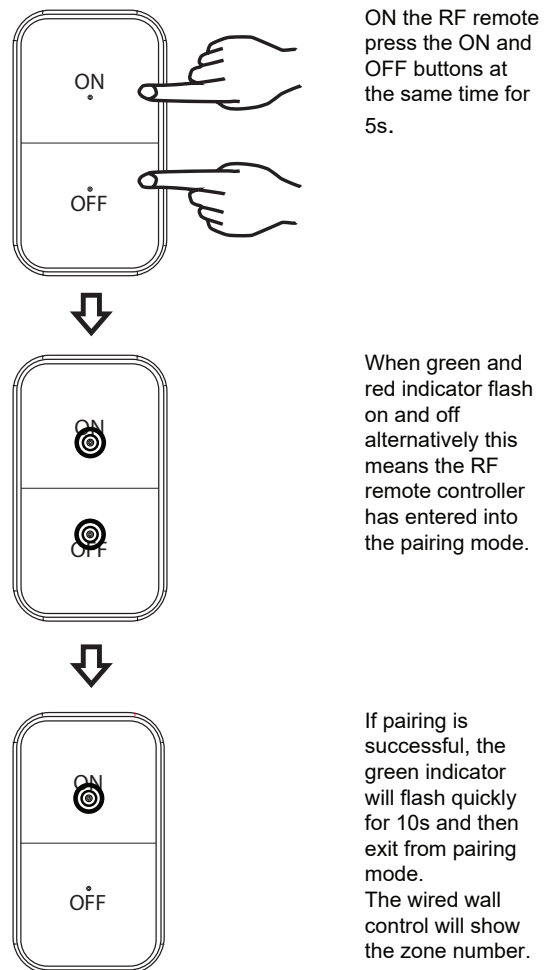


Fig 32.

Note:
If the RF controller does not pair within 5 minutes, the red indicator will flash quickly for 10s and then exit pairing mode.
If pairing is successful, the green indicator will flash quickly for 10s and exit pairing mode.

SYSTEM

1. Date and time

2. Language

3. Lightness

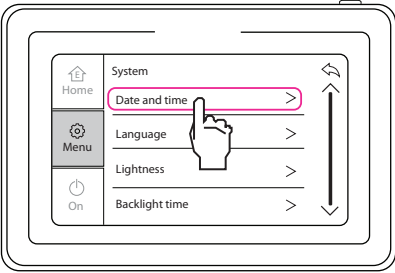
4. Backlight time
5. Sound

6. Main or Subsidiary
wired controllers

7. Debug

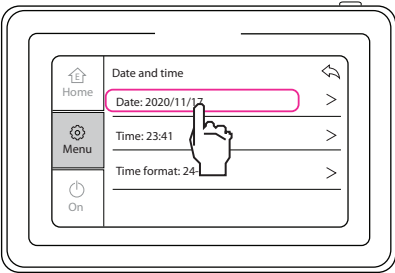
1. DATE AND TIME

The date setting is used to set the date.

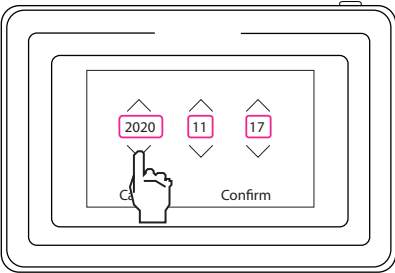


Press Menu button on the home page to enter the system menu.

Press “System” to enter page.



Press “Date”, “Time”, and “Time format” to enter the setting page.



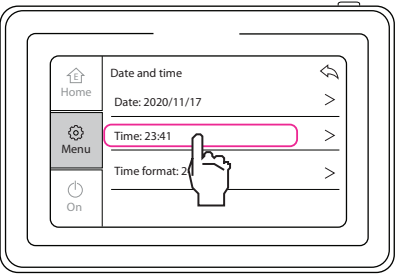
Use the ^ and v buttons to adjust the year, month, day.

Press “Confirm” to save.

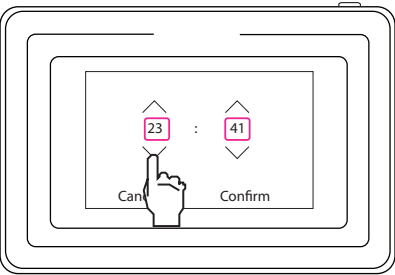
Fig 33.

1. DATE AND TIME

The “Time” setting is used to set the date and time.



Press “Date”, “Time”, and “Time format” to enter the setting page.



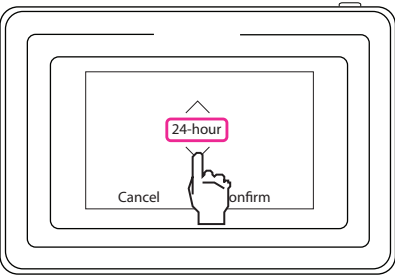
Use the ^ and v buttons to adjust hour and minute.

Press “Confirm” to save.

Fig 34.

HOUR FORMAT SETTING

The time format can be set to either 12 hour or 24 hour.



Use the ^ and v buttons to adjust between 24-hour and 12-hour time.

Press “Confirm” to save.

Fig 35.

Note:
We recommend using 24 hour time to prevent timer settings being set across 2 days.
A timer setting (Daily, Week, two Week) must be set for one day.
The day starts at 00:01 and finishes at 23:59.

SYSTEM cont.

2. LANGUAGE SETTING

Set the desired language for the system.

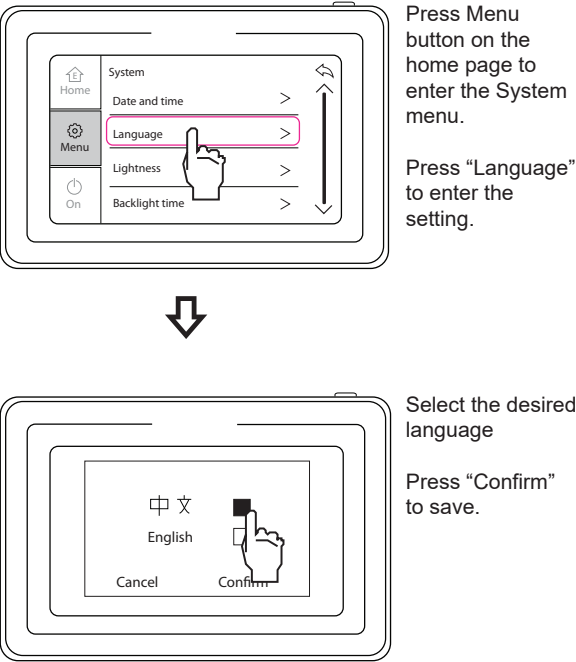


Fig 36.

3. LIGHTNESS SETTING

Adjust the screen brightness setting to vary the screen brightness as shown in the sequence below.

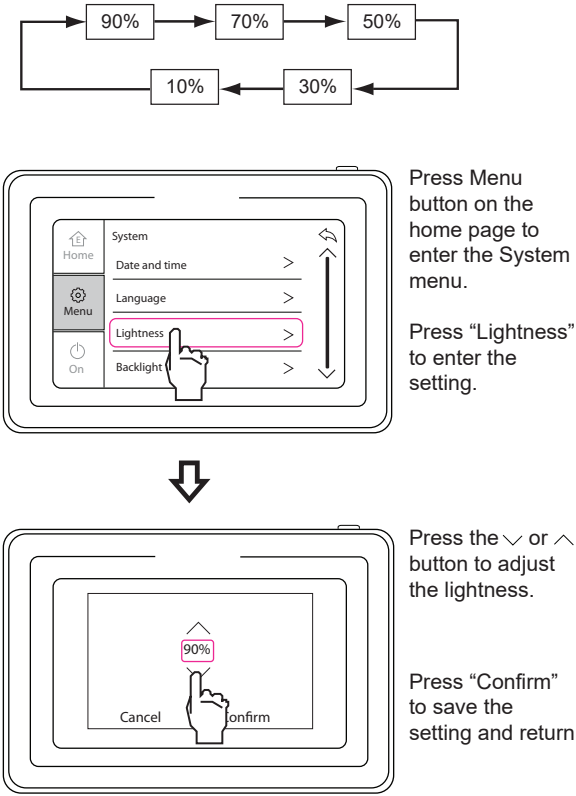
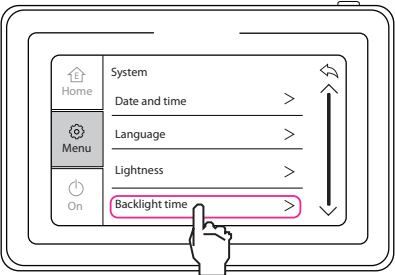
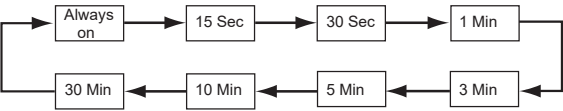


Fig 37.

SYSTEM cont.

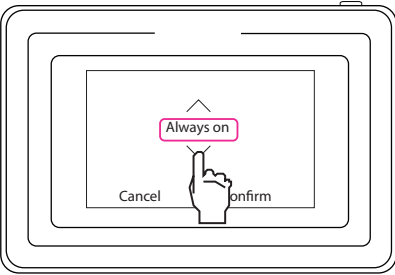
4. BACKLIGHT TIME SETTING

Adjust the backlight On time to vary the time as shown in the sequence below.



Press Menu button on the home page to enter the system menu.

Press "Backlight time" to enter the setting.



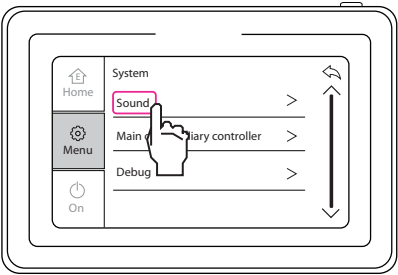
Press the ^ or v button to adjust the backlight setting.

Press "Confirm" to save the setting and return.

Fig 38.

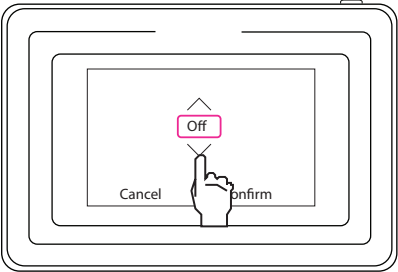
5. SOUND SETTING

Turn the sound On/Off through the sound setting.



Press Menu button on the home page to enter the system menu.

Press "Sound" to enter the setting.



Press the ^ or v button to change the backlight setting.

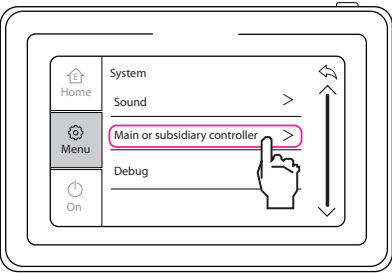
Press "Confirm" to save the setting and return.

Fig 39.

SYSTEM cont.

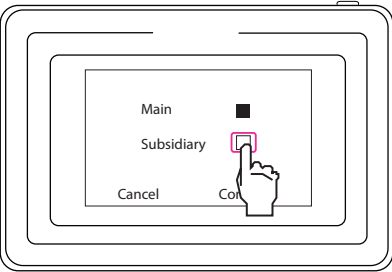
6. MAIN OR SUBSIDIARY CONTROLLER

This function must be set at wired wall controller that is connected to port 2 on the zone control interface.

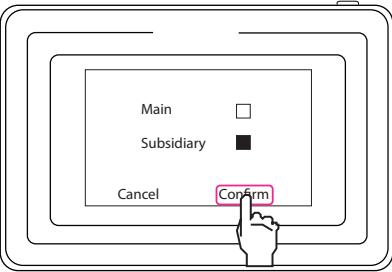


Press Menu button on the home page to enter the system menu.

Press “Main or subsidiary controller” to enter the setting.



Select a main or subsidiary wired wall control.



Press “Confirm” to save the setting and return.

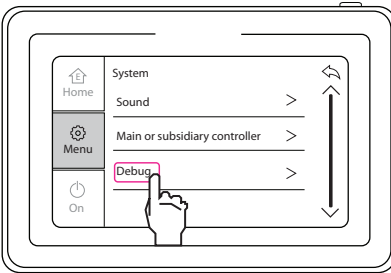
Fig 40.

Note:
Wired wall control is connected to controller port 1 on zone control interface is “Main”.

Wired wall control is connected to controller port 2 on zone control interface is “Subsidiary”.

7. DEBUG

Debug setting can only be entered by an authorised technician.
This procedure is done at commissioning.



Press Menu button on the home page to enter the system menu.

Press Debug button on the home page to enter the system menu.

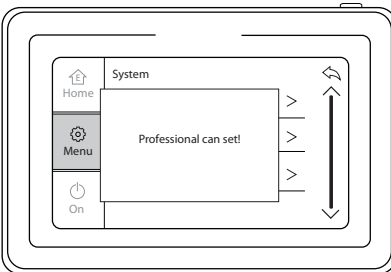
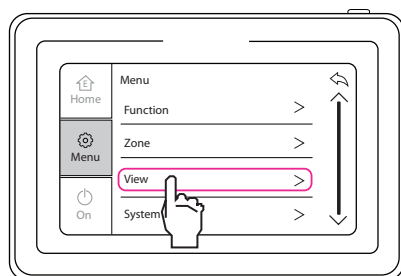


Fig 41.

VIEW

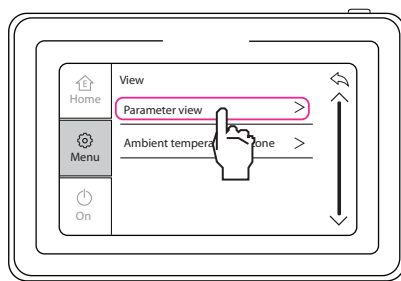
PARAMETER VIEW

The outdoor and ambient temperatures of the zones can be viewed from the “View” Menu.

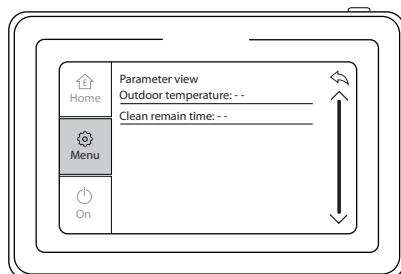


Press Menu button on the home page to enter the view menu.

Press “View” to enter the page.



Press “Parameter view” to enter the page of parameter view.

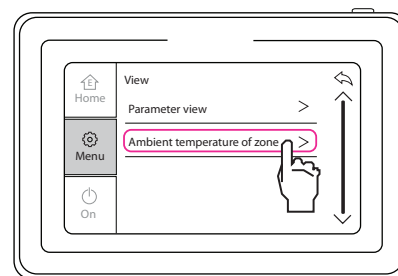


The outdoor temperature will be displayed, as well as the time left before cleaning.

Fig 42.

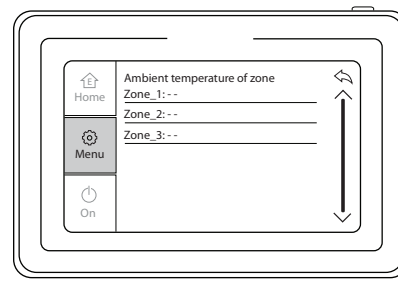
AMBIENT TEMPERATURE OF ZONE

The ambient temperature of each zone can be viewed.



Press Menu button on the home page to enter the view menu.

Press “Ambient temperature of zone” to enter page.

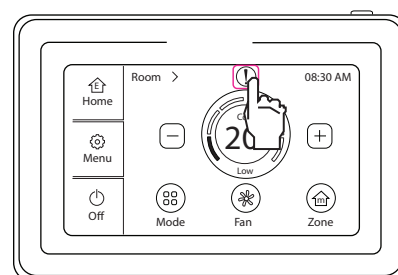


Press “Ambient temperature of zone” and you can view the ambient temperature of the zones.

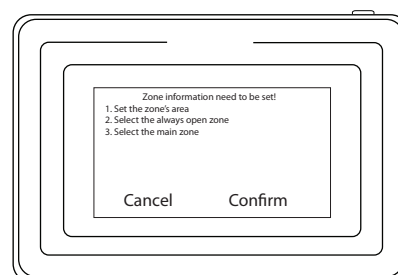
Fig 43.

VIEW MALFUNCTION

When there is a malfunction, the icon of malfunction will be displayed on the home page.



Press the icon of malfunction ① to enter the page of malfunction information.



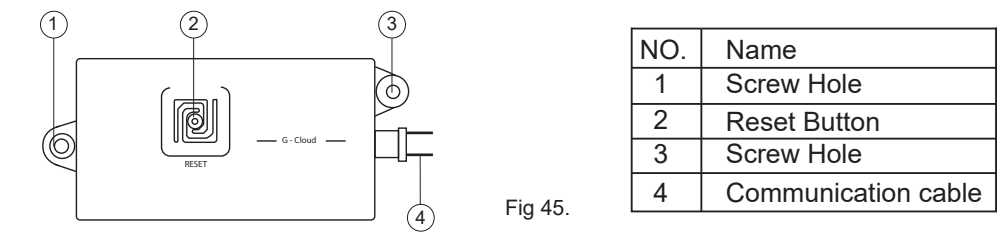
The screen will display the error message information.

Fig 44.

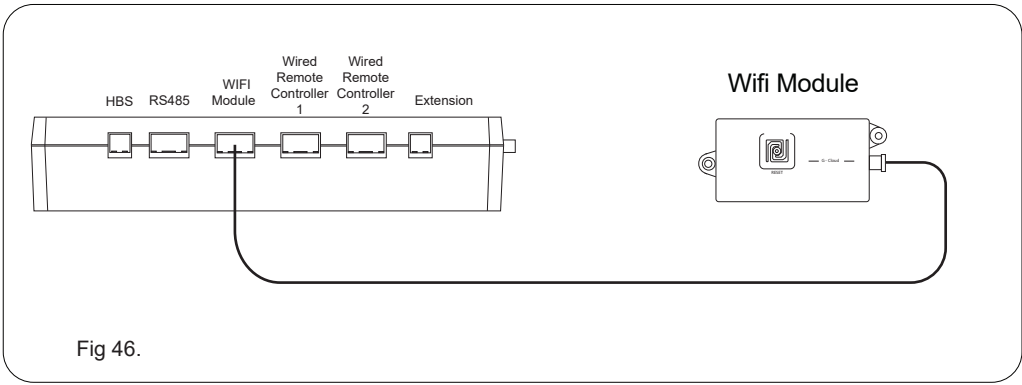
WIFI MODULE INSTALLATION

OPTIONAL PART - ME31-00/C13

The WiFi app can be installed at the same time as the zone control system, or, purchased and added to the zone control system at a later date.



1. Connect the Wifi Module to Wifi Module port on the zone controller.



2. Secure the Wifi Module to a suitable surface with screws.

APP DOWNLOAD

Control the air conditioner and track the running status through the internet.

Requirements for User’s smart phone:



iOS system

Support iOS 8.0 and above version



Android system

Support Android 4.4 and above version

Fig 47.

Scan the QR code or search “Ewpe Smart or GREE+ App” from the application market to download and install it. When “Ewpe Smart or GREE+ App” is installed, register your account and add the device to achieve long distance control and LAN control of smart home devices. For more information, please refer to “Help” in the App.



EWPE Smart App



App Download Link



GREE+ App

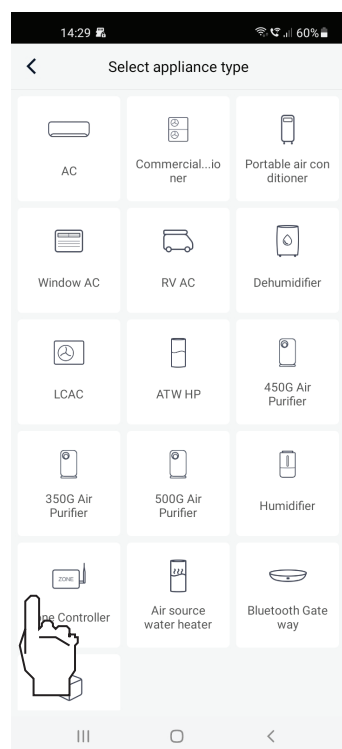




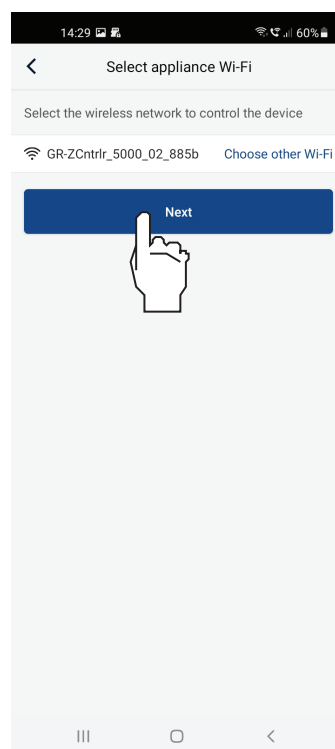
Fig 48.

WIFI MODULE INSTALLATION cont

EWPE SMART or GREE+ APP



Open up the EWPE SMART or GREE+ APP application select the zone controller icon.



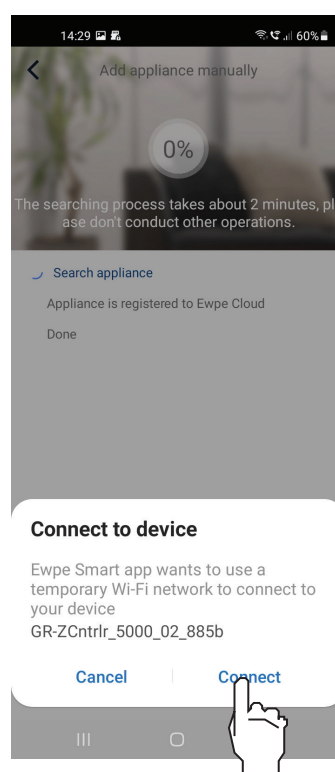
Connect to the appliance WiFi, press Next.



3 Step Process

1. Connect to the appliance manually.
2. Connect to the end user home WiFi.
3. Follow the on screen prompts to start the connection process.

Fig 49.



Confirm connection press Connect.

Fig 50.

WIFI MODULE INSTALLATION cont

EWPE SMART or GREE+ APP cont.



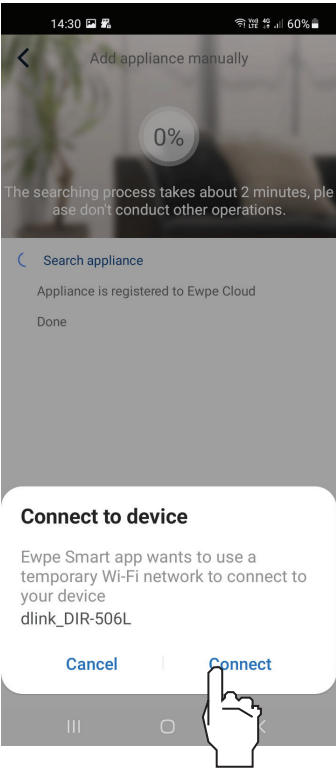
Next connect to the home Wi-Fi network, select your home Wi-Fi network enter your password for Wi-Fi network. Press Next

Note: you can view password by pressing the eye icon.

Process can take up to two minutes.



The zone control will now be able to be control through the application.



Next connect to the home Wi-Fi network, Press Connect.

Fig 52.

Fig 51.

ERROR CODES

Error Code	Error Description	Error Code	Error Description
C5	Temperature sensor error of wired controller	Lc	Activation failure
E1	Compressor high pressure protection	Ld	Compressor phase sequence protection
E2	Indoor anti-freeze protection	LF	Power protection
E3	Compressor low pressure protection, low refrigerant	Lp	Indoor and outdoor mismatch
E4	Protection and refrigerant collecting mode	P0	Drive reset protection
E6	Compressor high discharge temperature protection	P5	Over-current protection
E8	Communication error	P6	Communication error between main control and drive
E9	Indoor fan motor error	P7	Drive module sensor error
EE	Capacity code error	P8	Drive module over temperature protection
ee	Drive memory chip error	P9	Zero passage protection
F0	Full water protection	PA	AC current protection
F1	Indoor ambient temperature sensor error	Pc	Drive current error
F2	Evaporator temperature sensor error	Pd	Sensor connecting protection
F3	Condenser temperature sensor error	PE	Temperature drift protection
F4	Outdoor ambient temperature sensor error	PF	Outdoor memory chip error
F5	Discharge temperature sensor error	PH	Bus high voltage protection
H3	Electric box sensor error	PL	Bus low voltage protection
H4	Compressor overload protection	PP	Input voltage abnormality
H5	Overloading	PU	Charge loop error
H6	IPM protection	U7	4-way valve direction changing protection
H7	DC fan motor error		
Hc	Drive desynchronizing protection		
L1	PFC protection		

NORMAL OPERATION CODES

Code	Description	Code	Description
D1	Dred 1	H1	Defrost Mode
D2	Dred 2	E2	This may appear when in cooling and indoor airflow has been reduced for an extended period of time. Cooling is stopped momentarily to prevent the indoor coil from freezing.
D3	Dred 3		

MAINTENANCE & SERVICE

AIR FILTER

It is important to check and clean the air filter as per the maintenance Schedule below. A dirty air filter will not allow the correct amount of clean air to pass through your air conditioner, resulting in poor performance and increased running costs. You should ask the installer to show you where the air filter is located.

To clean the air filter, it should be removed and then cleaned with a vacuum cleaner.

If it is very dirty, wash it with soapy water and then wipe off. Make sure it is completely dry before refitting it.

You should never operate the air conditioner without the air filter in place.

INDOOR COIL

It is advisable to have the drain connections checked on an annual basis (as set out in the Maintenance Schedule).

Drains can be blocked by all types of insects, and rats have been known to chew through the drain to get to the water in the pipe.

OUTDOOR UNIT

The Outdoor unit has either one or two fans, it draws air through the appliance to expel the heat generated during the cooling cycle. We recommend checking that plants haven't grown into or around the air intake or outlet, along with other debris that may build up over time, namely, leaves and the like.

REFRIGERANT

The refrigerant is the life blood of your air conditioning unit. Not only does the correct refrigerant charge provide you with reliable and economical cooling, it also provides the air conditioning for the compressor. A lack of refrigerant, due to a leak, will cause the compressor to overheat and expire prematurely. You will notice a decline in air conditioning effect and an increase in power consumption. Therefore, having a qualified, licensed technician service your appliance will save you money in the long term.

PLEASE REFER TO THE NEXT PAGE FOR THE MAINTENANCE SCHEDULE

MAINTENANCE SCHEDULE

Installation Date:	/ /	Installer:	
--------------------	-----	------------	--

Items to be done by the Home Owner/User (please sign in the places indicated)							
	Monthly	Annually	Year 1	Year 2	Year 3	Year 4	Year 5
Air filter cleaning	✓						
Air filter replacement		✓					
Maintain required clearance around Outdoor unit		✓					

Items to be done by a Qualified Licensed Technician (Home owner/user must ensure that the technician signs and dates in the places indicated)	
	Annually
Check, clean or replace filter	✓
Check drain from indoor coil	✓
Check Outdoor unit clearances – maintain garden and debris (refer diagram p28)	✓
Check refrigerant charge	✓
Check refrigeration connections for soundness	✓
Check outdoor fans	✓
Check electrical connections	✓
Check overall installation	✓
Report to the home owner/user all tasks that require attention	✓

Year 1 – Date:	/ /	Technician:	
Year 2 – Date:	/ /	Technician:	
Year 3 – Date:	/ /	Technician:	
Year 4 – Date:	/ /	Technician:	
Year 5 – Date:	/ /	Technician:	
Year 6 – Date:	/ /	Technician:	

Please NOTE: the Maintenance Schedule covers Year 1 to Year 6. To preserve your investment for many years afterwards, we strongly recommend that you continue to maintain and service the Gree Ducted Inverter Air Conditioning appliance as per the items and frequency set out in the Schedule, and as indicated elsewhere in this Manual.

OPERATION TIPS

The following events may occur during normal operation:

1. Protection of the air conditioner.

Compressor protection

- The compressor cannot restart for 3 minutes after it stops.

2. A white mist coming out from the Indoor unit.

- A white mist may generate due to a large temperature difference between air inlet and air outlet on COOL mode in an indoor mode in an indoor environment that has a high relative humidity.

3. Low noise of the air conditioner.

- You may hear a low hissing or gurgling sound when the compressor is running or has just stopped running. This sound is the sound of the refrigerant flowing or coming to a stop.
- You can also hear a low "squeak" sound when the compressor is running or has just stopped running. This is caused by heat expansion and cold contraction of the plastic parts in the appliance when the temperature is changing.

4. Dust is blown out from the Indoor unit.

This is a normal condition when the air conditioner has not been used for a long time or during first use of the appliance.

5. A peculiar smell comes out from the Indoor unit.

This is caused by the Indoor unit giving off smells permeated from building material, from furniture, smoke (for example if someone is cooking food, candles, incense), or from the duct work.

6. FAN operation during COOL mode.

When indoor air temperature reaches the setting on the wired wall control, control, the compressor will stop operating and after approximately 60 seconds the indoor fan will stop blowing air. Unless X-Fan has been activated where the indoor fan will continue for some minutes to dry the coil of the indoor unit. When the room temperature rises back to the set point, the indoor fan and the compressor will start again.

CLEARANCES

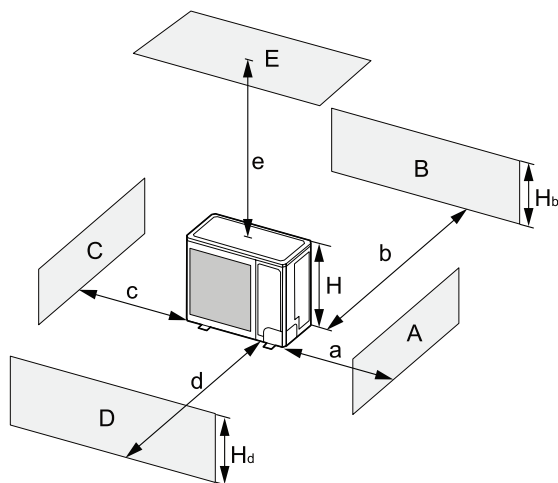


Fig 53.

A~E	Hb Hd H	(mm)				
		a	b	c	d	e
B	—	—	≥100	—	—	—
A,B,C	—	≥300	≥100	≥100	—	—
B,E	—	—	≥100	—	—	≥1000
A,B,C,E	—	≥300	≥150	≥150	—	≥1000
D	—	—	—	—	≥1000	—
D,E	—	—	—	—	≥1000	≥1000

Note: Distance in front of the outdoor may be reduced with the use of the Gree air deflection grilles. Consult your installer for more information.

TROUBLESHOOTING

Problem	Probable Cause	Remedy
1. The air conditioner does not run.	1.1 Power failure. 1.2 Fuse blown or circuit breaker open. 1.3 Thermostat adjustment too low (in heating mode) or too high (in cooling mode).	1.1 Wait for power to resume. 1.2 Replace the fuse or reset the breaker. 1.3 Check thermostat setting.
2. There is insufficient cooling.	2.1 The room was probably very hot when you started the system.	2.1 Wait a while so the appliance has enough time to cool the room.
3. 'Clicking' sound is heard from the air conditioner.	3.1 In heating or cooling operation any plastic parts may expand or shrink due to a sudden temperature change in this event, a clicking sound may occur.	3.1 This is normal.

WARRANTY & SERVICE

For prompt, efficient service, please follow the above before calling the appropriate number below.

For Warranty 1800 4733 463

When calling the Warranty Service number, please ensure you have your model and serial number available, along with date of purchase, and if possible a description of the problem or the error code.

NOTE:

Gree Australia strives for continuous product improvements, therefore specifications are subject to change without notice. Unit colour may vary slightly from that depicted in this booklet.

Installation and commissioning of this system to the manufacturer's specification, and compliance with industry standards, and local, state and national regulatory codes, are the responsibility of the installer.

Information in this booklet was true and correct at the time of publishing.

SYSTEM INFORMATION

Table to be filled in by a Qualified Licensed Technician
(Home owner/user must ensure that the technician signs and dates in the places indicated)

INSTALLATION INFORMATION

Installation Date:

Installer:

MODEL INFORMATION

Indoor model number

Serial Number.....

Outdoor model number

Serial Number.....

Number of zones

Wi-Fi module location

Number of zone motors

Wired Wall control location

Number of RF Remotes

Is Wi-Fi connected.....

ZONE INFORMATION

Zone number 1 Area m²

Zone name

Zone number 2 Area m²

Zone name

Zone number 3 Area m²

Zone name

Zone number 4 Area m²

Zone name

Zone number 5 Area m²

Zone name

Zone number 6 Area m²

Zone name

Zone number 7 Area m²

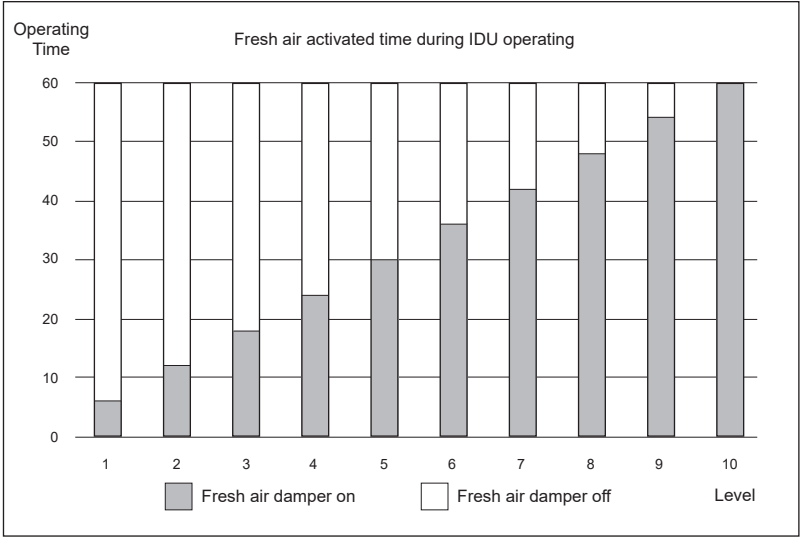
Zone name

Zone number 8 Area m²

Zone name

CHARTS

FRESH AIR FUNCTION



AIR function level
1 ~ 10 are available for wired wall controller .
1 ~ 2 are available for wireless wall controller.

Fig 54.

FILTER CLEANING REMINDER

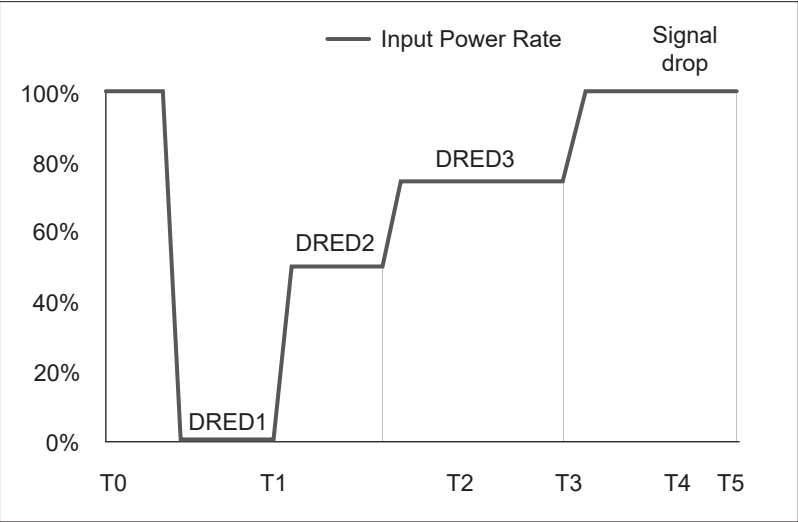
Pollution level	Accumulated operating time (hour)	Pollution level	Accumulated operating time (hour)	Pollution level	Accumulated operating time (hour)
1	5,500	2	1,400	3	100
1	6,000	2	1,800	3	200
1	6,500	2	2,200	3	300
1	7,000	2	2,600	3	400
1	7,500	2	3,000	3	500
1	8,000	2	3,400	3	600
1	8,500	2	3,800	3	700
1	9,000	2	4,200	3	800
1	9,500	2	4,600	3	900
1	10,000	2	5,000	3	1000

Cleaning remind of air return inlet’s filter according to pollution level (air quality) to select the accumulated operating time.

Fig 55.

CHARTS cont.

DRED

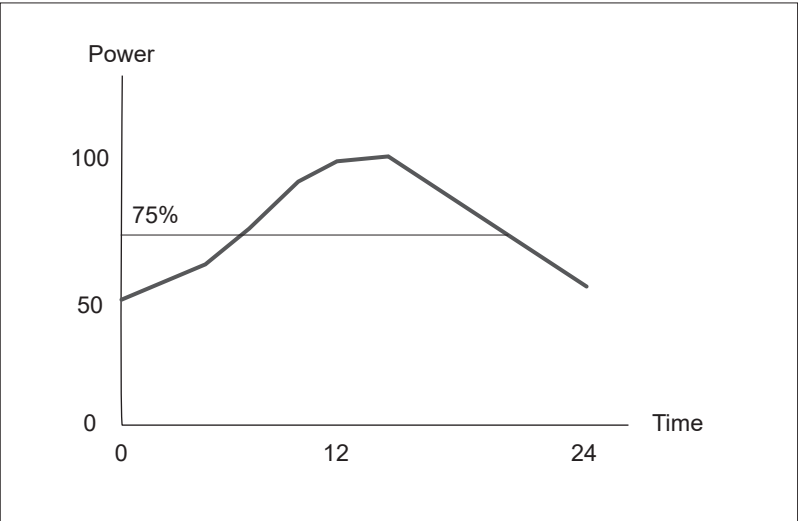


For national power shortage, response to DRED signal within 1 second.

Where DRED function is connected, the power supply authority may limit the amount of power being consumed by switching the DRED signal on the appliance.

Fig 56.

I-DEMAND



Satisfy the basic cooling requirement, with saving power up to 25%. After setting the fan speed is fixed at AUTO.

This function limits the power usage to 75%, thus cooling or heating your space may take a little longer, but this function will also reduce the power consumed to do so. Under I-Demand the set point is fixed at 27°C and the indoor fan is fixed at AUTO.

Fig 57.

NOTES



Smart air for smarter living

It is the policy of Gree New Zealand to introduce continuous product improvements. Accordingly, specifications are subject to change without notice.

Please consult with your dealer to confirm the specifications of the model selected.

Warranty Service

0800 289 4733

hello@greeac.co.nz